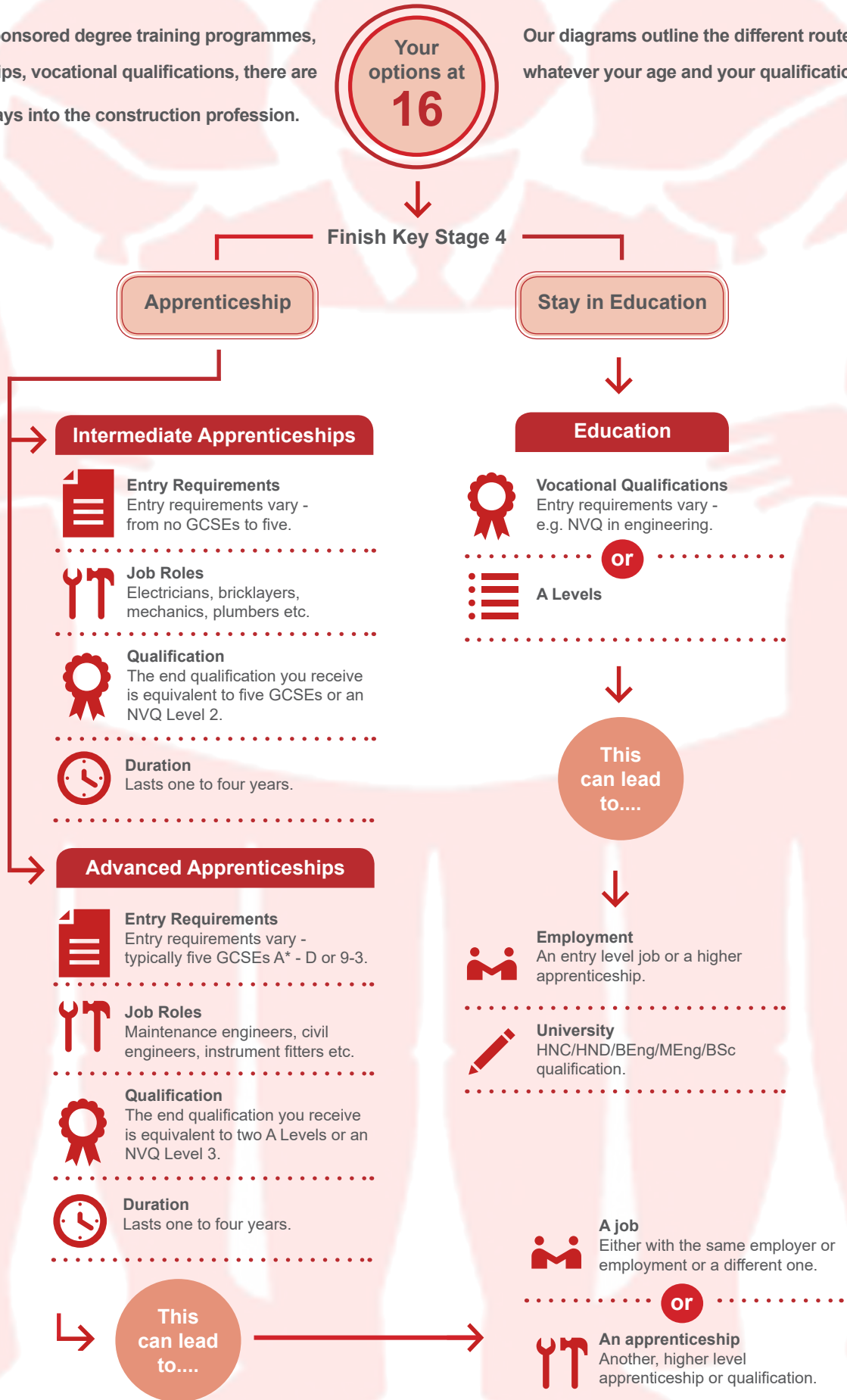


ROUTES INTO CONSTRUCTION

University, sponsored degree training programmes, apprenticeships, vocational qualifications, there are all sorts of ways into the construction profession.

Your options at **16**

Our diagrams outline the different routes for you, whatever your age and your qualifications to date.



ROUTES INTO CONSTRUCTION

Your options at 18

Finish Key Stage 5

Apprenticeship

University

Sponsored Degree Programmes

Higher Apprenticeships



Entry Requirements
Entry requirements vary - usually two A levels and five GCSEs.



Job Roles
Designers, construction managers, engineers etc. But you'll have less responsibility than if you had completed a degree.



Qualification
The end qualification you receive is equivalent to an NVQ Level 4 or a foundation degree/HNC/HND.



Duration
Lasts two to four years.

Degree Apprenticeships



What's involved?
Complete a bachelors degree level qualification and your professional qualification.



Duration
Lasts up to six years.

This can lead to....



A job
Either with the same employer or employment or a different one.



University

Sponsored Degree Programmes



Some employers are developing alternatives for A Level students. These usually involve you studying for a degree while working for the company.

This can lead to....



A Job

University



Entry Requirements
Entry requirements vary - some ask for specific A Levels.



Cost
Fees up to £9,250 a year. Can be funded by a student loan, bursaries or an employer.



Courses
Variety of courses available.



Duration
Courses typically last three or four years + an optional work experience year.

This can lead to....



Employment
An entry level job or a higher apprenticeship.



Further Study